

How to create the image of a green region – the example of Lolland

Leo Christensen

Lolland Energy Holding A/S

Denmark

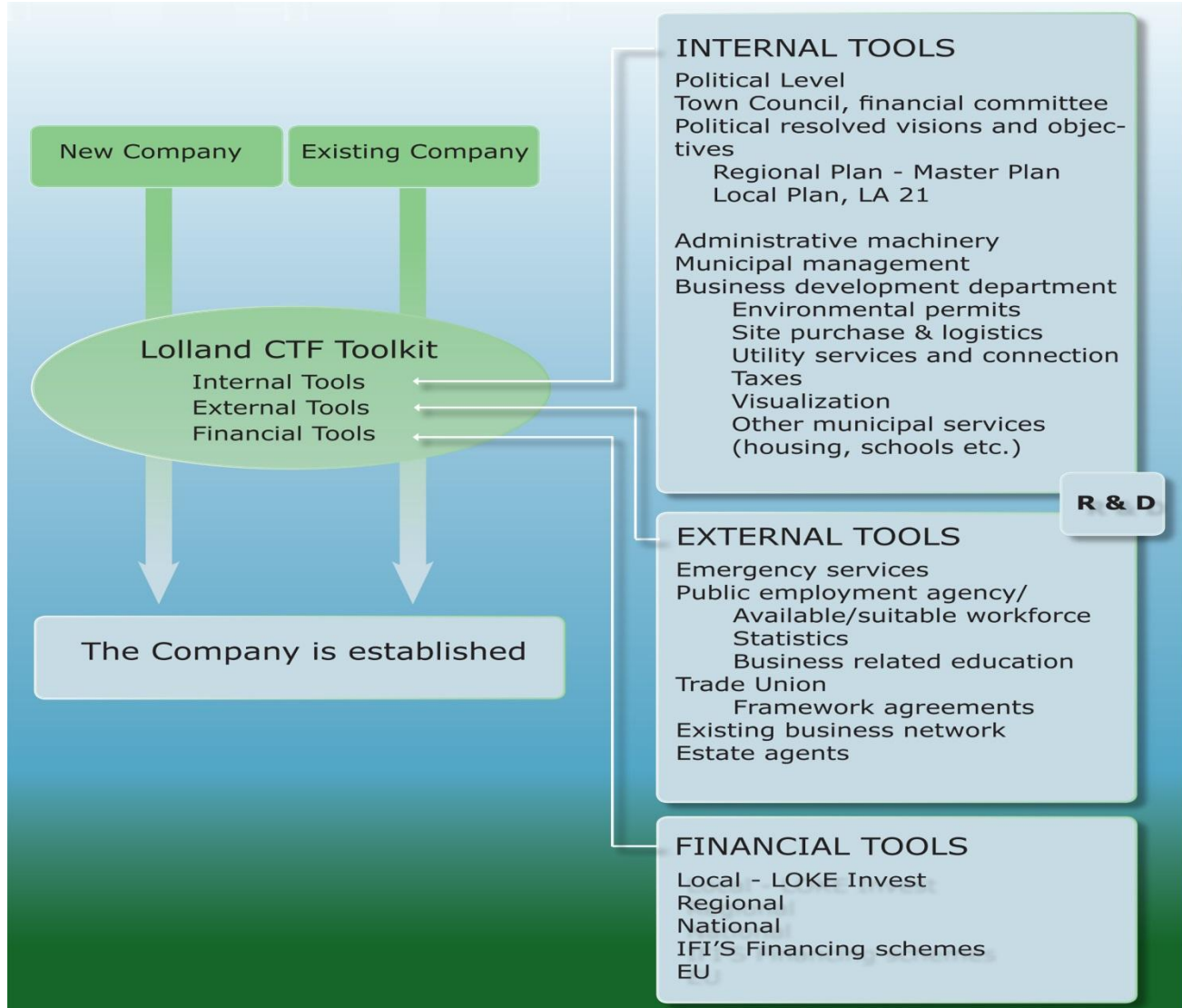


Vision

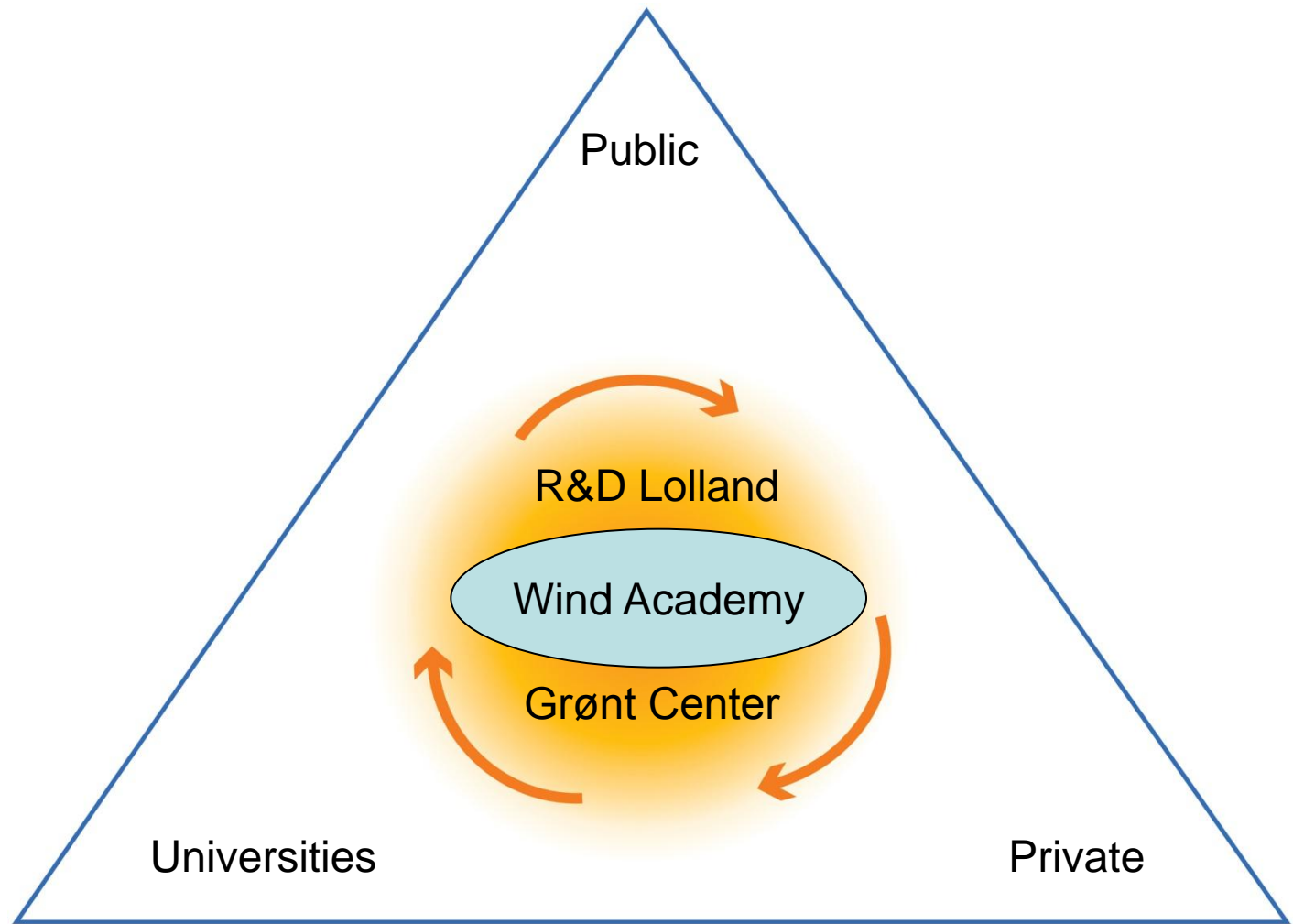
To create long-term partnerships within business, research and education on renewable energy, focused on solving today's energy problems from many angles, including technological, organizational and political approaches.



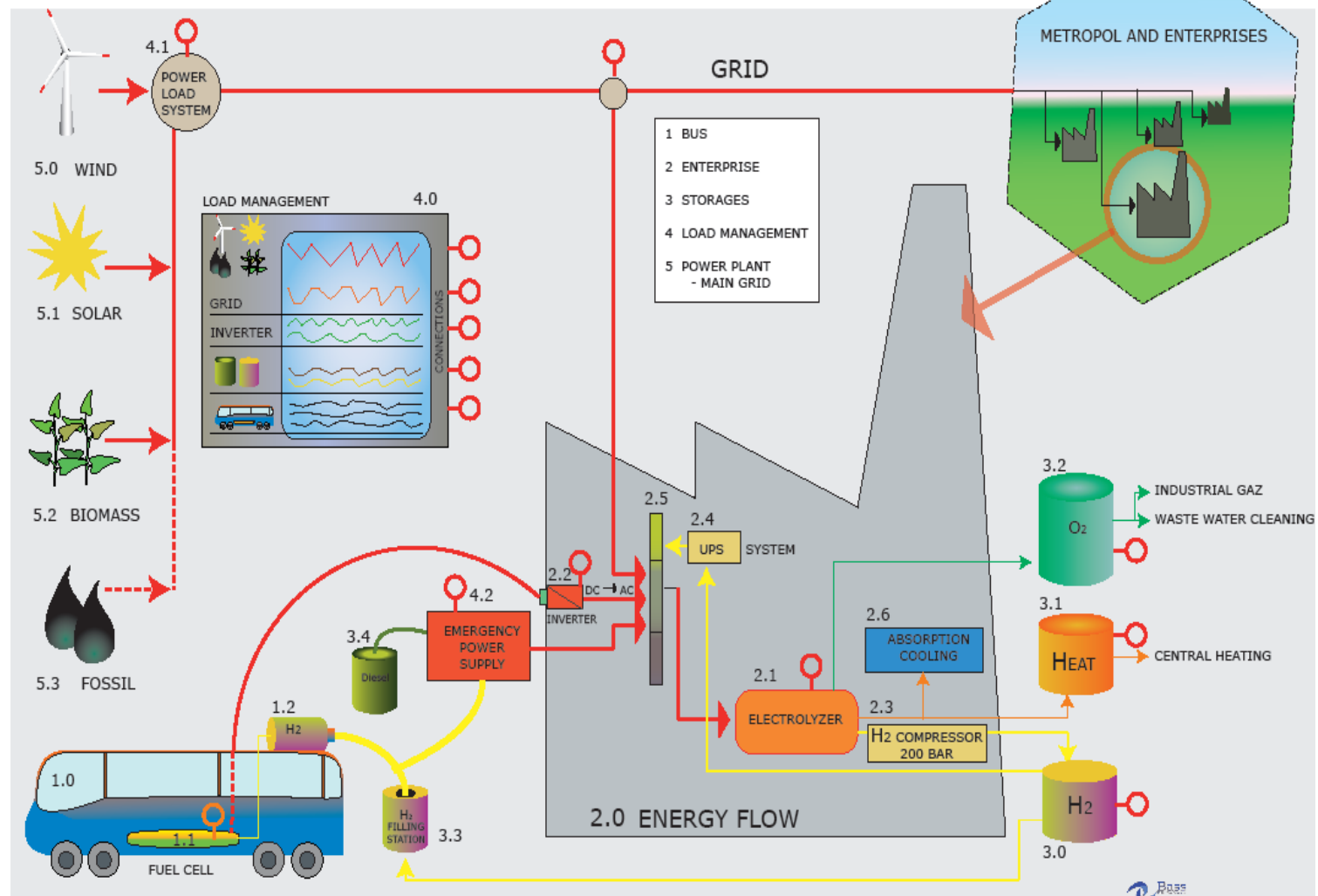
Lolland Toolkit



Triple Helix Networks

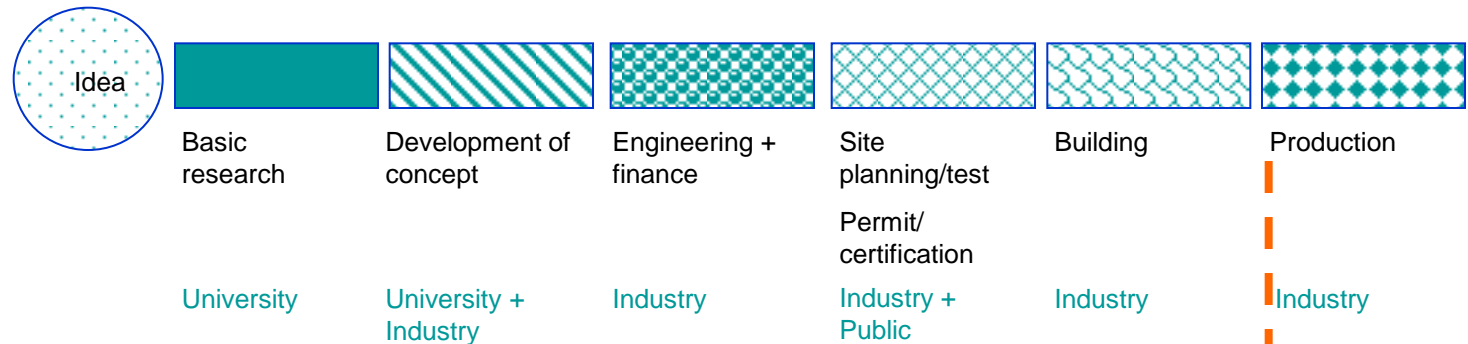


INTEGRATED HYDROGEN UTILIZATION SYSTEM (IHUS)

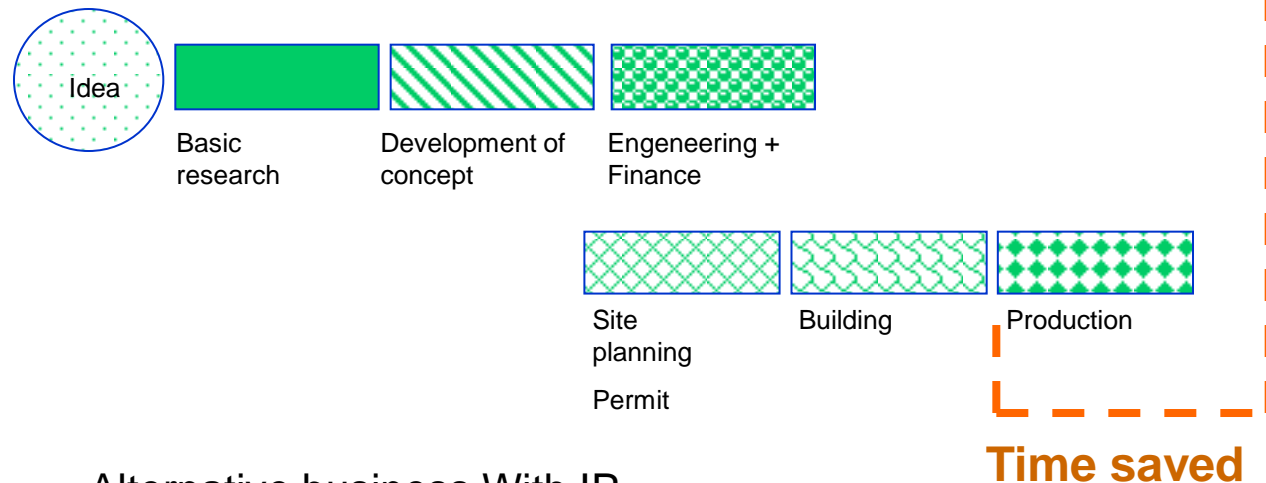


CTF – How it works

The traditional flow...

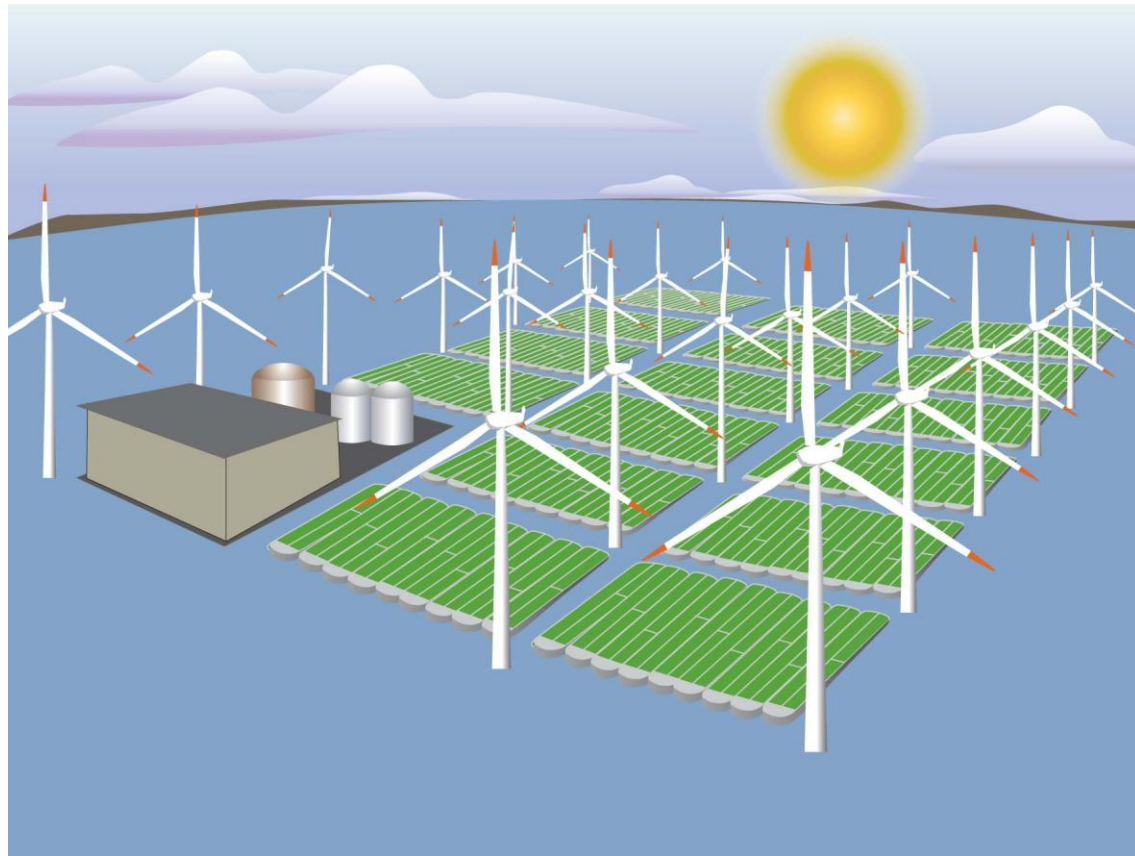


CTF flow...



Alternative business With IP

Time saved

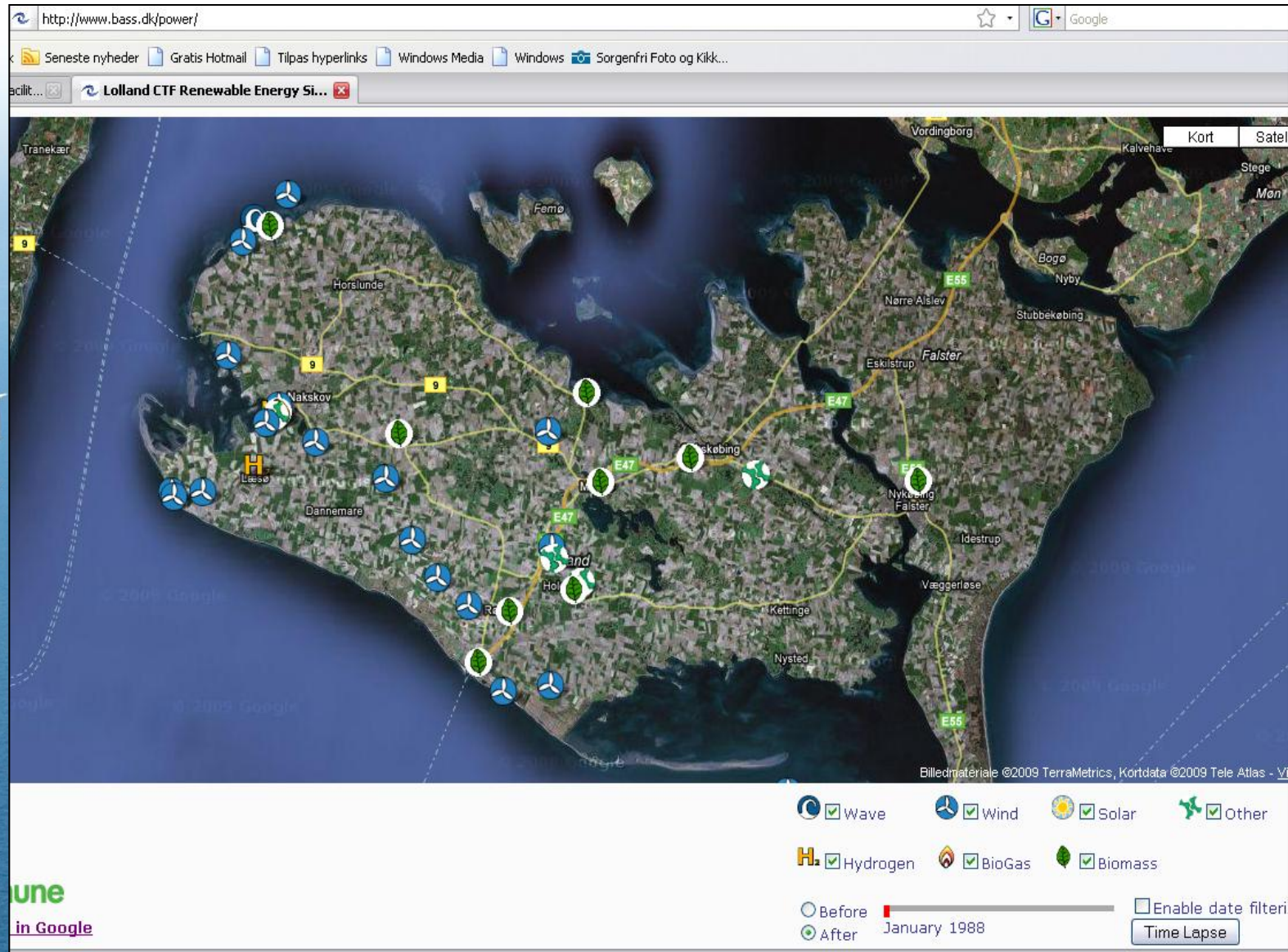


Now to the hard part

- Get a political plan approved.
- Raise the first money
- Get partners
- Raise more money
- Build the plants and testfacilities
- Support the scientists
- Show it to the world

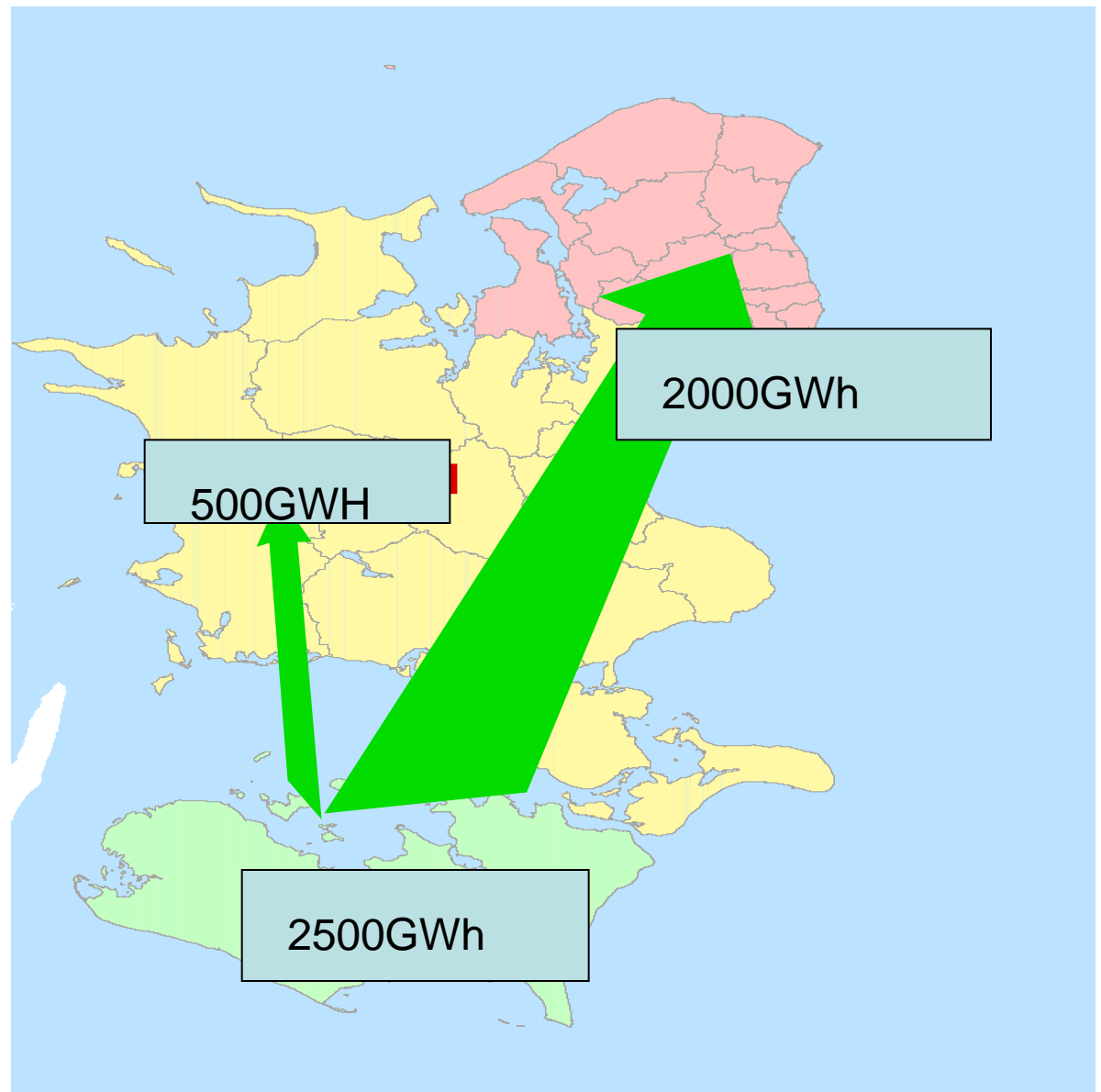


Lolland CTF



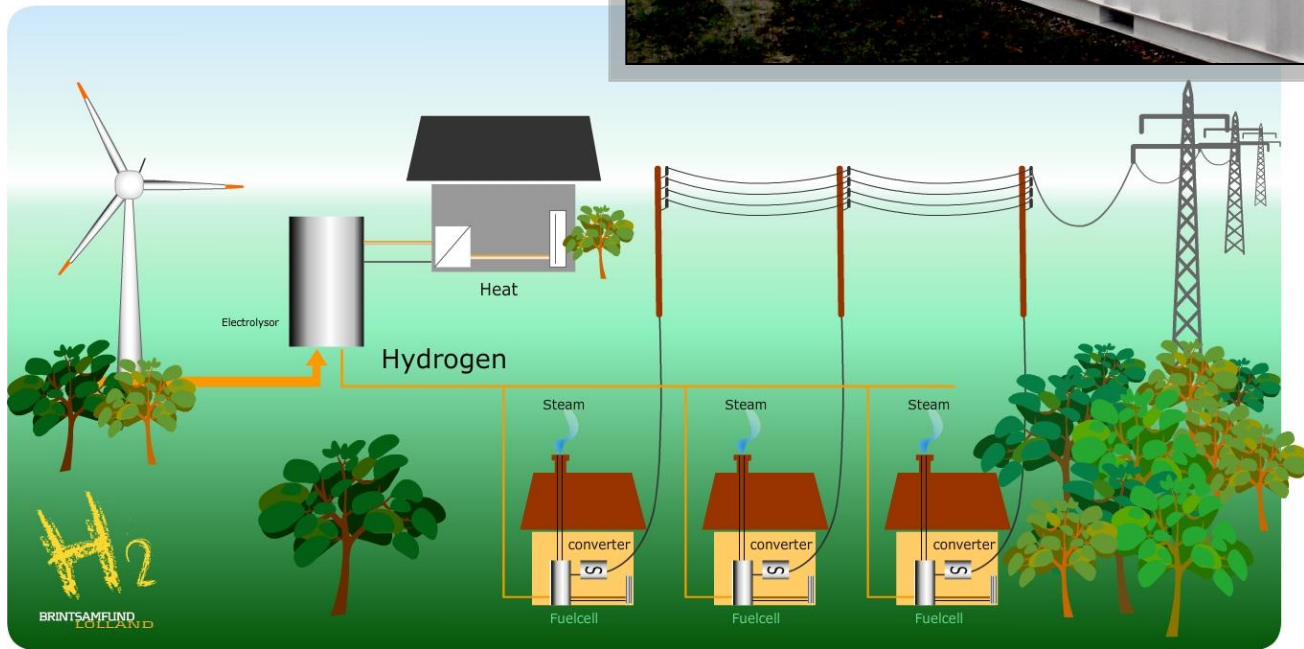
Export of wind energy





2013 we estimate to export 2500GWh

Hydrogen Village



Onsevig Climate Park





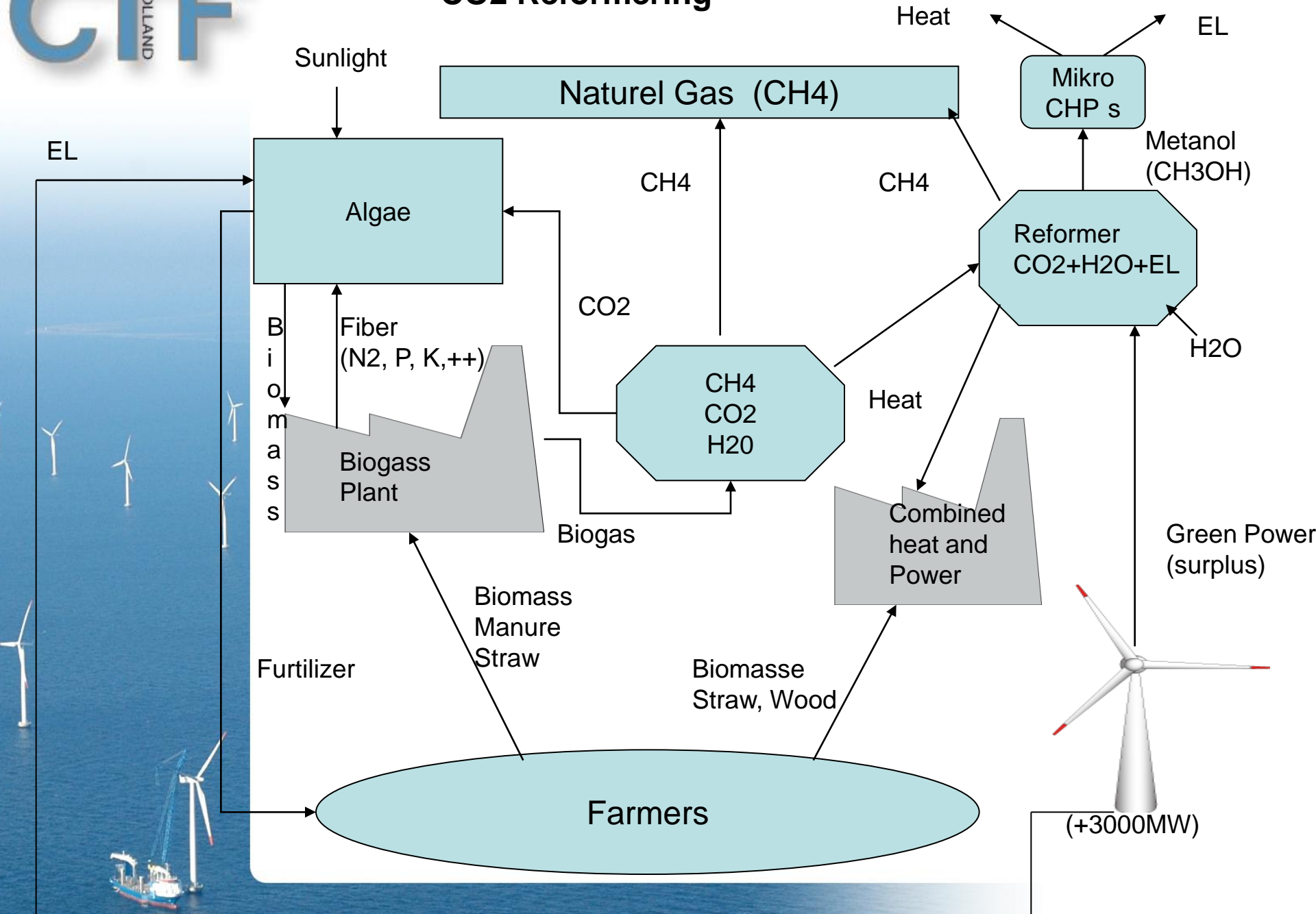
Wave Energy & Offshore Test Field



Biomass & Biotech



CO2 Reforming



How to create an image

- Try to Google "Sustainable Development Lolland"
- Create an organisation which can handle visitors
- Be sure you have the politicians back-up
- Made your projects part of the local success stories
- Share the success and take the blame on your shoulder



Think global...



Thank you for your
attention